



*Your
Community Resource*

The Woodlands Word

December 2025



The President's Report

Larry Dobias



2025 is rapidly coming to an end. This is evident by the changes in weather, the increasing numbers of cars on the road, crowded stores and restaurants, difficulty in getting a tee time on your favorite golf course etc. At home the clocks have been turned back, new batteries placed in the smoke detectors, furnace filters changed, furnace inspected to insure there is heat when needed, etc. Perhaps the biggest impact to the community is the increased traffic at certain times and locations. The reported trouble spots are the entrance at both Park Trance and Old Venice Rd as well as the cul de sac at the end of Rivendell Blvd. Contact has been made with the Sheriff's office and conversations

had with Traffic Control. They have been provided with specific time periods where speeding and illegal parking have been reported. All we have at this time is the promise to increase patrols and steps would be taken to monitor the magnitude of the problem. This is anticipated to occur throughout the remainder of the year. If nothing changes in the coming months, the Board has approved the hiring off duty officers in 2026 to get better control of traffic. Given the number of members on the roads and walks and the children trying to get back to school, the objective is to improve the safety of all involved. Be careful when driving. Speeding is unacceptable and there are consequences to disobeying the law.



DECEMBER DINING EVENT

The first International Dining event will be help on Friday, December 12th at 7:00 pm. The group will meet at Kolukan Mexican Bar & Grill in Gulf Gate at 6644 Gateway Avenue. Kolukan, an upscale Mexican restaurant, has been offering a three-course prix dinner for \$39 with many choices for each course. If you would like to join us, please contact Adele Kellman at adele.kellman@gmail.com or (908) 464-7003 by December 5th. The group gathered there last year and enjoyed the food, so we will be trying it again. And if you would like to come, but not to make the drive, please ask Adele to arrange a ride.

Gentle Reminder



The end of the hurricane season is November 30th and all hurricane shutters that are still up need to be removed or opened.

Tuesday Rivendell Ladies Luncheon Group

The Tuesday Rivendell Ladies Luncheon Group meets on the second Tuesday of the month. The next luncheon will be on December 9, 2025 starting at 12:30 pm and Bodrum Restaurant in Venice. The address is 225 Miami Avenue in Venice. To facilitate scheduling, the luncheon group will be limited to 16 attendees, and you will need to sign up by December 2nd.

Alexis Spaulding will be hosting the December luncheon, so if you haven't yet reserved, please contact Alexis at alexis.spaulding46@gmail.com. To put your name on the mailing list about upcoming Tuesday luncheons, please contact Helen McClure at mccclurenash@gmail.com.



HOME OF THE \$99 MAINTENANCE PLAN



Pino's

AIR CONDITIONING & HEATING

**SIGN UP TODAY AND RECEIVE
2 COMPLIMENTARY
MAINTENANCE VISITS
WITHIN 1 SERVICE YEAR WITH
A MEMBERSHIP PLAN!**



Family Owned & Operated Since 2012 • LIC#CAC1823415

10% OFF



(941) 249-4438



Pinosair.com



1960 Stickney Point Rd. Suite 208 Sarasota, FL 34231

PROFESSIONAL



PLUMBING & DESIGN, INC.

A COMPANY YOU CAN TRUST

- ☒ Fully licensed, bonded & insured
- ☒ 100% Satisfaction Guaranteed
- ☒ Family owned and operated since 1985
- ☒ Better Business Bureau A+ rated
- ☒ Non-Commission Employees
- ☒ Non-Franchise Company
- ☒ Third party verification by:



**Call The Professionals!
(941) 484-4444**

www.ProPlumbingDesign.com

Lic. # CFC 057045

**\$10.00 OFF
Service**



Cannot be used on minimum service charge and cannot be combined with any other discounts



Pollinators

By Bob Franks, Ponds and Preserves Committee

Pollinators are the unsung heroes of our environment, quietly working behind the scenes to sustain the health of our ecosystems. These vital creatures include bees, butterflies, hummingbirds, bats, beetles, and other insects, all of whom play a crucial role in pollinating plants, promoting biodiversity, and supporting agricultural productivity. Recognizing their importance and taking steps to support their populations can bring enormous benefits to our community, our environment, and our quality of life.

Pollinators are vital to the survival of roughly 75% of flowering plant species and about 35% of the crops we consume worldwide. In Florida, their contributions are indispensable—pollinating native plants, ornamental gardens, and an array of fruits and vegetables. Beyond agriculture, pollinators play a critical role in maintaining vibrant natural ecosystems across our state. They support native plants and animals by facilitating plant reproduction, which helps maintain habitats for birds, butterflies, and other wildlife. This interconnected web of life enhances biodiversity, making our community more resilient to environmental stressors and a beautiful place to live.

Pollinator populations nearly everywhere are in sharp decline. Loss of habitat to development, pesticide use, invasive plant species, monoculture agriculture and climate change all play a role. What can a homeowner do to help? Here are several ideas. Planting a variety of native flowering plants that bloom at different times of the year provides a consistent source of nectar and pollen for pollinators. Reducing or eliminating the use of chemical pesti-

cides and herbicides helps protect these beneficial insects from harmful toxins. Additionally, providing bare soil areas or shallow water sources can offer nesting and drinking spots for pollinators like bees and butterflies. Rivendell homeowners can play a role in supporting healthy and diverse pollinator populations by adopting these simple steps. You can find some great information about nature pollinator plants at:

<https://gardeningsolutions.ifas.ufl.edu/plants/ornamentals/bee-plants/>



Giant Swallowtail butterfly



Atala butterfly



Bumblebee

COMMUNITY

Free Estimates

ROOFING

 OF FLORIDA, INC.

Lic# CCC1330642

"Proudly Serving Your Community" • Family Owned and Operated
100% Maintenance Free Roofs!

We Do All
Roof Overs, Roof Coatings,
Roof Repairs & Inspections
on all Manufactured Homes
800-511-2517



Lifetime Warranty on Labor & Materials!
www.CommunityRoof.com

Social Committee Events for December 2025



Offered WEEKLY: Ladies Walk 'n Talk. Meet at the Rivendell Pool. Contact Lesley Glick at Lesleymg8@gmail.com or (973) 219-5839 for more information and if you'd like to be added to the Facebook Walk 'n Talk. Dates and times of walk will change depending on the season.

- Monday, December 1st, from 2:00 to 4:00 pm. Mah Jongg. To attend, contact Maria Ilioff at (607) 427-4192.
- Thursday, December 4th, from 1 to 4 pm. Bridge Club. To join, contact Barb Loe at (651) 398-2256.
- Monday, December 8th, from 2:00 to 4:00 pm. Mah Jongg. To attend, contact Maria Ilioff at (607) 427-4192.
- Monday, December 8th, 7:30 pm. Book Group. For more information, contact Adele Kellman at (908) 464-7003 or Lesley Glick at (973) 219-5839.
- Tuesday, December 9th, 12:30 pm. Tuesday Ladies' Luncheon Group. To join, contact Helen McClure at mcclurenash@gmail.com.
- Friday, December 12th, 7:00 pm. International Dining. To attend, contact Adele Kellman at (908) 464-7003 or adele.kellman@gmail.com
- Monday, December 15th, from 2:00 to 4:00 pm. Mah Jongg. To attend, contact Maria Ilioff at (607) 427-4192.
- Thursday, December 18th, from 1 to 4 pm. Bridge Club. To join, contact Barb Loe at (651) 398-2256.
- Monday, December 22th, from 2:00 to 4:00 pm. Mah Jongg. To attend, contact Maria Ilioff at (607) 437-4192.
- Monday, December 29th, from 2:00 to 4:00 pm. Mah Jongg. To attend, contact Maria Ilioff at (607) 427-4192.

Ladies Walk 'n Talk

It's been almost two years since the Ladies Walk and Talk group started. This is a great opportunity for exercise, social interaction, and meeting new people. We meet weekly for 1-hour walks starting at the Community Pool on Thursday mornings. With group input, we have varied and interesting walking routes. While we're burning calories, we're also building and nurturing healthy habits and social bonds. We welcome new members! For more information, contact Lesley Glick at lesleymg8@gmail.com or 973-219-5839.



Our walking group dressed warmly for our most recent stroll around Rivendell – if you remember the cool weather we had in November. Here is a photo of the group on one of our many walks around the community.



So what's up with all the yellow stakes on the beach?

By Terry Siemsen, CERT

Many of you are probably occasional to frequent beachgoers – who can't help but enjoy our great beaches! ... but all those yellow stakes during the summer? What gives??

Some of you may know I'm a volunteer with Mote Marine Laboratory and Aquarium – more specifically, I volunteer to help monitor sea turtle nesting on Casey Key. I just finished my third year of 'patrolling' the beach very early every Sunday morning (yes, broken leg and all!)

Mote turtle patrol volunteers are the extra "eyes" for the professional staff – volunteers number close to one thousand and check beaches from the southern portion of Longboat Key to Venice Beach every day, from mid-April until late October. We look for false crawls (attempts by female turtles to find a suitable nesting spot) and new nests early in the spring and summer and progressively watch for hatches of baby turtles as the summer continues. New nests are marked with yellow stakes by Mote professionals (yes, those yellow stakes) which have lots of information in a coded format. The cryptic marks on these stakes aid volunteers who monitor the nests - the stakes mark the approximate location of a nest and include information on the nest date, turtle species and critical items like predation and hatching.

For those who might be interested in Casey Key nesting success, 2025 was a record year! It was a record for both loggerhead and green turtles – nesting and false crawls. Of all the beaches monitored by Mote, almost half of the false crawls and nests occurred on Casey Key. For 2025, there were over 2700 nests on Casey Key and over 3400 false crawls! That's over 380 nests per mile on a beach that's about seven miles long!

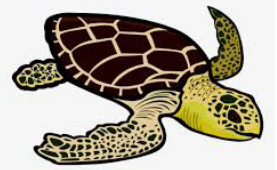
Interesting sea turtle facts –

Only female sea turtles return to land, males spend their entire life at sea after hatching.

A female sea turtle doesn't start nesting and laying eggs until about thirty years of age.

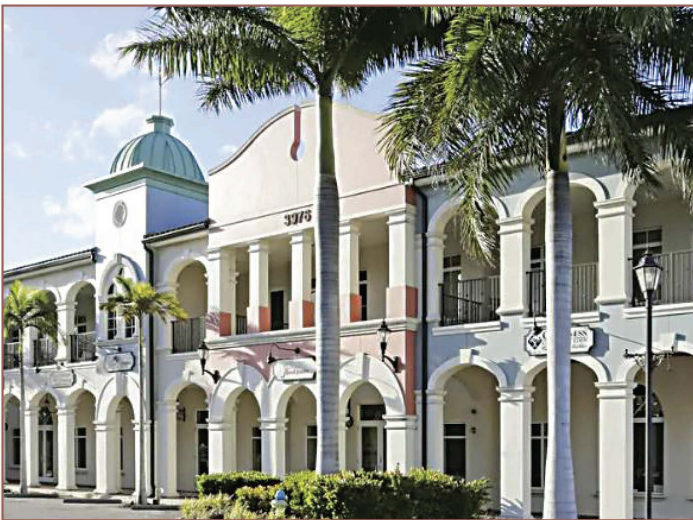
A female may lay eggs several times each season, often one hundred eggs or more, and these multiple nests may be very close together - sometimes almost right on top of an earlier nest.

A female will return to the same approximate place to nest from where she was born – how they know where to return is subject of much study.



WE WANT TO BE YOUR JEWELER!

Unlike big chain stores, Diamond Bay Jewelers is a locally owned, family business offering the most complete in-house repair services backed by over 30 years of experience.



What we offer:

- Jewelry and watch appraisals by a GIA certified Gemologist
- Laser jewelry repairs: unlike traditional fire torch use, repairs can be done with modern laser technology on even the most delicate gemstones.
- Custom design and redesign services: create new pieces or breathe new life into your old pieces.

On Site appraisals while you wait: make an appointment to come in and get an updated value on your jewelry by one of our very experienced GIA gemologists. It's very important to update the valuable pieces in your jewelry collection especially since all precious metals, diamonds, and colored stones have gone up dramatically in the last few years. We aim at becoming your trusted go-to family jeweler.

We carry a vast selection of diamonds and colored stone jewelry and are proud to carry the new fresh & trendy Imperial Pearls Collection.

We look forward to serving Sarasota, Osprey, and Venice from the beautiful Bay Street Plaza.



3976 Destination Dr., Unit 105 • Osprey, FL
941-786-1013 • DiamondBayJewelers.com

\$10 OFF
ANY REPAIR SERVICE
OF \$50 OR MORE

(LIMIT 1 PER CUSTOMER. EXPIRES 12/31/25)

How Does Santa Get Into Homes That Don't Have Chimneys?

By Nancy Dobias



Did you ever wonder how Santa gets into homes that do not have chimneys? Well, wonder no more. Google seems to have the answer to everything and such a surprise it was to read all the enterprising ways that Santa uses to surreptitiously enter our homes to surprise and delight children with his treasures.

For instance, have you ever heard of Clausmosis? Santa uses this when he's tired. First the reindeer deposit Santa on top of the roof. Next Santa

lies flat down on the roof. Then Santa's body merges with the roof, and *poof!* Santa's body «melts» down through the roofing materials and then in a blink of an eye, out into the home Santa and his pack magically emerge. After Santa leaves all the toys for the kids, he then uses reverse Clausmosis to exit the home. This usually involves a little more pep out of Santa since he has to find a chair high enough for him to at least reach up and finger-touch the ceiling. Once that happens, it's *poof* and up through the ceiling Santa zips and off Santa and the reindeer fly.

Santa can also use a magic key to open any door anywhere, but this is a key that Santa uses sparingly. Not everyone is asleep when they should be and who knows what might happen when a door in the home should open unexpectedly. A Dirty Harry wannabe could be waiting on the other side...

A generally much safer method is for Santa to use his other special magical powers. These powers allow him to enter the home through any of the conventional openings that are in homes--dryer vents, pipes for plumbing, gaps under the doors, etc. To enter this way Santa can shrink himself down and then slip or slide his way under a door and into a room, or through a pipe and then out into the

faucet and into the sink. His magical dust keeps him and his bag of toys from getting wet or crushed. Generally, Santa knows whether anyone is using the plumbing before he even goes this route so at least there's no unexpected surprises. One piece of plumbing that Santa never uses for entry though is the toilet. Santa has had some unfortunate experiences with those who forget to flush.

I read that Santa's favorite way of getting into a home is just to twitch his nose. It was good for two things. One...it only works if everyone is asleep inside the home, and Two...it tells Santa whether all the kids in the home have been good apple dumplings and therefore are deserving of presents. If one part was not true, then Santa's twitching could not pop him into the home but if both parts were true, Santa would be inside and could safely leave his presents. After all...*The nose knows!*

P.S. BUT, please keep in mind that if you know someone who was a good apple dumping and deserving of gifts, one reason why Santa may not have entered a home to leave gifts is because it cost money to employ elves. Parents are supposed to leave money out for Santa so he can pay his elves a fair wage. The cookies, milk and carrots only go so far. It could be someone forgot to leave out some money for the elves....



Photos by Chuck Pertile

Best of Venice Winner for 2024



Look what the wife dragged in...

Blair Post, HAS, BC-HIS, ACA

Board Certified Hearing Instrument Sciences
American Conference of Audioprosthology

The day was off to a hilarious start when a new client quipped, "Look what the wife dragged in!" Karen

couldn't help but burst into laughter, trying to catch her breath amid the hilarity.

The joke, a playful twist on the classic phrase "what the cat dragged in," was even more amusing to Karen because it jokingly hinted at the challenge of convincing husbands to get a hearing test. Of course, the idea of resorting to caveman-style head bashing to drag them in was all in good fun (please note: we don't endorse violence of any kind).

Amused, Karen and Madge chatted about the creative ways wives have tried to convince their husbands to get their hearing checked.

Rest assured, no husbands were actually harmed during the process. Madge confessed to playfully threatening to suffocate her husband in his sleep, pillow therapy, if he didn't address his hearing issues soon. Surprisingly, this lack of breathing threat was the catalyst that pushed him to see Blair and explore new options.

It would be a dream to have the perfect line that magically convinces all husbands to take action on their hearing problems. Alas, such a golden phrase remains elusive. Karen is tirelessly searching for that one-line wonder. She might be searching for it to use to get me to do something.

For wives dealing with husbands who struggle to hear at the dinner table, perhaps you could try some light-hearted "pillow therapy." Alternatively, you can gently suggest booking an appointment for a free hearing test and demo by calling 941-244-9300.

Here's to harmony in your home and improved hearing for everyone!



(941) 244-9300

**Contemporary
HEARING**

Matching your lifestyle to new technology

242 Tamiami Trail So, Venice, FL 34285

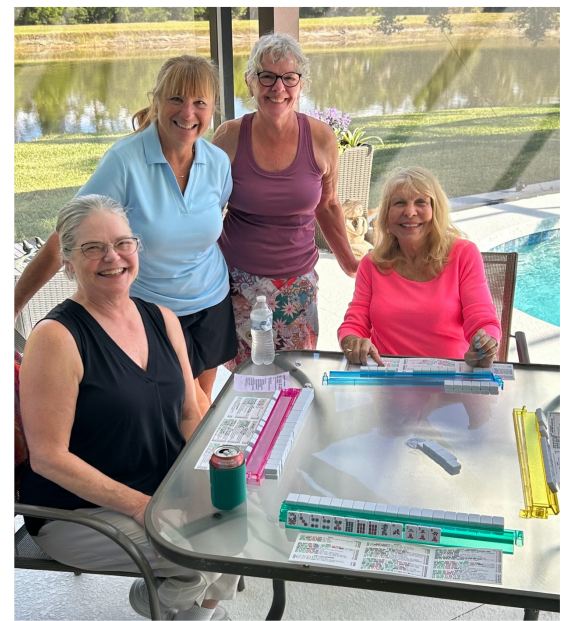
ContemporaryHearing.com

The New Monday Mah Jongg Group

A new group of Mah Jongg players has been meeting on Mondays of each week. They are Beginner Plus players (not Intermediate or advanced) and welcome new players to join them. Their focus is on having fun while improving their game. Players who enjoy the process of learning and growing together are welcome to join.



Below is a photo of some of the players:



Beginning Mah Jongg Players Soon to Graduate!

Thanks to Roz Bergman, who has been teaching a group of Rivendell women to play Mah Jongg, we will soon have a larger group of players in the community. They are completing a series of four (or maybe more?) lessons with Roz, and will be released to the community as full fledged Beginners soon. Below is a photo of the group.



SUDOKU

| | | | | | | | | |
|---|---|---|---|---|--|---|---|---|
| | | | | 2 | | 7 | 1 | |
| | 5 | | 3 | 6 | | 9 | | |
| | 7 | 3 | | | | | 6 | |
| 6 | | 7 | | | | | 9 | |
| | 9 | 1 | | | | 8 | 3 | |
| | | | 7 | | | | | 4 |
| 5 | 1 | | 6 | | | | | |
| 3 | | 6 | 8 | 4 | | 1 | | |
| | | | | 9 | | | | |

Puzzle from <https://www.printable-puzzles.com/>

(solution on page 17)

Your
MANUFACTURED & MOBILE HOME
Insurance Specialist

**Manufactured • Mobile
 Park Model • Cars
 Boats • Golf Carts**

Great Options...Great Prices



BASSINE
INSURANCE
 AGENCY, LLC

909 Pondella Road., N. Ft. Myers, FL 33903
 at the corner of Pondella Rd. & Orange Grove Blvd.

Phone 239-995-0333

E-mail: mh@bassineinsurance.com

TARGET YOUR MARKET!

Call us today to get your ad in one
 of our community newsletters!

941-723-5003

ON TRAC
 PUBLISHING

P.O. Box 161

Ellenton, FL 34222

A subsidiary of PCI Communications



www.ontracnewsletters.com

email: valerie@ontracnewsletters.com

PROFESSIONAL & EXPERIENCED

Maintenance Committee Project List

By Mark Giordano

There will be no report for this month, but below is the list of projects that the MC has completed in 2025, those that remain to be completed and a start on proposed projects for 2026.

PROJECT LIST 1/4/2025

Revised 9/14/2025

2025

| <u>PROJECTS</u> | <u>COST ESTIMATE</u> | <u>ACCOUNT</u> | <u>PRIORITY</u> | <u>VENDOR</u> |
|---|-----------------------------|-----------------------|------------------------|----------------------|
| Completed 2025 | | | | |
| Gazebo Replacement | | | | |
| Lamppost Replacement Project | | | | |
| Cottages Drainage ROW | | | | |
| Irrigation Relocation West Side of Bridge | | | | |
| Concrete Curbing | | | | |
| Rivendell land bridge and access cleanup | | | | |
| Annual Palm Tree Trimming - 87 Palms | | | | |
| Replacement of Flowers Entrances and Islands. | | | | |
| Repairs to Pool Pump Room Ceiling | | | | |
| Bat Houses - 2 Locations - 4 Houses | | | | |
| Additional Work Viburnum Hedge Alley by Riv Park | | | | |
| Viburnums - Alley, Riv Blvd, Sub Sta | | | | |
| Replace Electric Pedestal Controller 3 | | | | |
| Replace fixtures entrances | | | | |
| Relocate Power Outlets Bridge, Park Trace | | | | |
| Tree Trimming and Removals | | | | |
| Replace 4 Benches | | | | |
| Ponds and Preserves Mallard Lake shore Restoration | | | | |
| Fence Restoration | | | | |
| Plant Trees Cottages ROW and Island | | | | |
| Trim Both Sides Pine View Path | | | | |
| Electrical Improvements in Cottages and Big Riv. Irrigation | | | | |
| Electrical Improvements Ibis, Pine, Golden Ponds | | | | |
| | | | | |
| BALANCE 2025 | | | | |
| Cottages Park Design and Construction - 50% | | | | |
| Playground Mulch | | | | |
| Landscape Mulch | \$12,220 | | | Truscapes |
| Resolve Low Flow Issues at the Pool | | | | M&D |
| Pine View Path Asphalt Restoration | | | | |
| Pressure Wash Pool Area and Seal Pavers | \$1,100 | | | Wee-Kleen |
| Replace 4 lights at Pool. | \$260 | | | DRM |
| Replace the 5hp pump and 3" Flow Meter | \$4,375 | | | HealthyPools |

| | | | | |
|--|-----------------------------|---------------------------|------------------------|----------------------|
| Holiday Lights | \$3,000 | | | MC |
| Oak Trim Pool | \$1,200 | | | GT |
| Removal of Banyan Tree Cottages | \$3,800 | | | GT |
| Replace Solar Pump at the Pool. | | | | |
| | | | | |
| 2026 | | | | |
| | | | | |
| | | PROJECT LIST 0125B | 0126B | |
| <u>PROJECTS</u> | <u>COST ESTIMATE</u> | <u>ACCOUNT</u> | <u>PRIORITY</u> | <u>VENDOR</u> |
| | | | | |
| 2026 Proposed Project List | | | | |
| | | | | |
| Cottages Park Completion 70% Balance | \$10,000 | | | |
| Viburnum Hedge Osprey Pond | \$4,500 | | | |
| Trimming | \$2,800 | | | |
| Remove 5 @ 60 | \$300 | | | |
| Furnish 10 @ 75 | \$750 | | | |
| Plant 10 @ 25 | \$250 | | | |
| Misc | \$400 | | | |
| | | | | |
| Stillwell Irrigation | \$20,000.00 | | | |
| Riv Blvd add a Zone | \$1,650 | | | |
| Crane Pond | \$2,650 | | | |
| Controller Replacements | | | | |
| Electric Pedestal Replacements various Locations | | | | |
| INSTALL 43 LIGHT STANDS AND MOVE OUTLETS AND LIGHTS | | | | |
| | | | | |
| Tree Trimming, Removals and Plantings 2026 | | | | |
| Pine Pond Water Trim | \$3,200 | | | Green Topps |
| | | | | |
| | | | | |
| | | | | |
| | | | | |
| | | | | |

Potluck Dinner a Success!

On November 1st, Maria and Greg Ilioff hosted a large group for a potluck meal. There were many delicious appetizers, entrées and desserts. The diners met new neighbors, welcomed old friends, and enjoyed a relaxed evening together. Below are some photos of the guests and food from the evening.



MSC Social Committee Plans Events for the Year

Our new social season is well underway at The Cottages! Our Social Committee, chaired by Debbie Craddock, met last month to plan our social calendar for the coming year. We are happy to bring back some favorite activities, including our Tree Lighting & Pizza Party in December, the International Potluck Dinner in January, our Wine

Tasting Event in March, and Bingo Night in April. Other monthly activities such as Saturday Morning Coffee, Happy Hour on the Porch, and Friday Night at the Movies, are always fun-filled events where neighbors can gather, share stories, and enjoy great food. We look forward to another exciting social season on the Circle!





ARC Meeting - Wednesday, October 22, 2025

Time/Place: 4:30pm Conference Call 605-313-5721 code 655 3857

Members Present: Jim Duncan, Joe Casale, Bill Borgelt, Michelle Meyer (Board Liason)

Others Present: Greg Walsh

Please see the Notes at the end of this schedule which contain important information, not just "boilerplate"

| No. | Address | Name | Description | Comments & Specific Conditions of Approval (See Notes below) | Approved as submitted (See General Conditions) | Approved with Specific Conditions | Denied (See Notes) |
|-----|-----------------------|--------------------------|--|---|--|-----------------------------------|--------------------|
| 1 | 931 Scherer Way | Thomas Hurban | Reroof tile for tile with Barcelona 800 Desert Spice Blend THBCS 6313 | | X | | |
| 2 | 936 Scherer Way | ThreeFarms LLC | tile for tile reroofing with BelAir Hillsborough Blend # 4883 | | X | | |
| 3 | 1348 New Forest | Robert Karaniewski | tile for tile reroofing with Westlake Barrel Montgomery Blend 1 GOCS6298 | | X | | |
| 4 | 1077 Mallard Marsh | Rebecca Rasmussen | Generac Generator on side of house, obscured by hedge and connected to pre-existing underground propane tank | | X | | |
| 5 | 1176 Mallard Marsh | Helen & Mike McClure | Water softener next to A/C units on S side of house, shielded from view from street by existing hedge | | X | | |
| 6 | 634 Rivendell Blvd | Robert & Grazyna Merrill | Re-roof replacing barrel tile with with Stone-chip coated Novatik metal Roman (barrell) profile in Sand color. | Flashing will be installed under/behind stucco where visible from street; gutters installed on horizontal roof edges where visible from the street. | | X | |
| 7 | 1012 Oak Meadow Lane | Gregory & Sue Walsh | Install a so-called "Front portico lanai" (screen in main front entry) using extruded aluminum in white | Deferred to Nov Meeting in order to consider homeowner submission made <24 hrs before meeting | | | |
| 8 | 726 Fordingbridge Way | Lisa Nee | re-roof tile for tile with Eagle Capistrano Profile #39604 Maple Blend | | X | | |
| 9 | 1068 Mallard Marsh | Scott Christie | Repaint. Body: SW6113 Interactive Cream; trim & garage door: SW6385 Dover White. Entry door: unchanged | | X | | |
| 10 | 682 Clear Creek | Shuai Shao | Remove two mature but unsightly pines that as they have grown have become too close to structure and are damaging the lanai screen | | x | | |
| 11 | 734 Shadow Bay Way | Joe Bernstein | replace windows and Doors. No grids. White frames. | | X | | |
| 12 | 1084 Mallard Marsh | Janet Lorie | Replace windows and doors. White frames. Grids in front | | x | | |

| | | | | | | | |
|----|--------------------|----------------------|--|---|---|--|--|
| 13 | 807 Placid Lake | Leon & Barbara Brown | replace entry walk with pavers. Edge driveway with same pavers. Add walkway of pavers across small garden bed adjacent to drive and corner of garage, approx 9" wide alongside edge of drive | Awaiting design & installation specs. Deferred to next month. | | | |
| 14 | 1159 Mallard Marsh | Robert Walker | Retile roof with Eagle Kona Red Range # 2698 | | X | | |

Specific Conditions Applicable to Conditional Approvals only (as noted above)

1. If your project is marked "Approved with Specific Conditions", the specific conditions are described above.
2. If there is any ambiguity regarding the specific conditions of approval, it is your responsibility to seek clarification before starting work.
3. If you need further information in order to comply with them, please let the ARC know (ARCRivendell@gmail.com) and it will do its best to be helpful.

General Conditions (applicable to all approvals)

1. Please complete the project within one year from the date above and in accordance with the general and specific conditions that apply.
2. If you use contractors, they should be licensed and insured; you are responsible for damage caused to the property of others or to the common areas.
3. You are responsible for any permits required and that the work complies with local zoning and building regulations.
4. When pressure washing is part of the scope of work, please use non-chlorine cleaners.
5. When windows are being replaced, those in the front of your house must have "grids" (aka muttins or grills).
6. When trees and bushes are to be removed, the stumps must be ground down to a min of 3" below grade.
7. The roof color & material and/or paint colors you submitted (and the only ones the ARC approved) are noted in the Description above.
8. You have read the RCA's Standing Rules and ARC Guidelines and will make sure the work done conforms with them.

Denials

If the ARC denied your request, the reasons are set forth under Comments.

Reviews, Appeals, Mediation, Litigation

If your proposal has been denied or you are unwilling to comply with the General or Specific Conditions of Approval, you should not start work until the matter is resolved. You may ask the ARC to review its decision based on any new information you can make available. You may also ask that the Board of Governors to review the ARC's decision (which it may or may not do) and/or avail yourself of the opportunity to have an independent third party mediate the dispute. You may also take such other legal action as is provided in Florida Statute 720.311. If the Board agrees to review the ARC's decision, it will ask you to state in writing in what ways the ARC's decision is unreasonable.

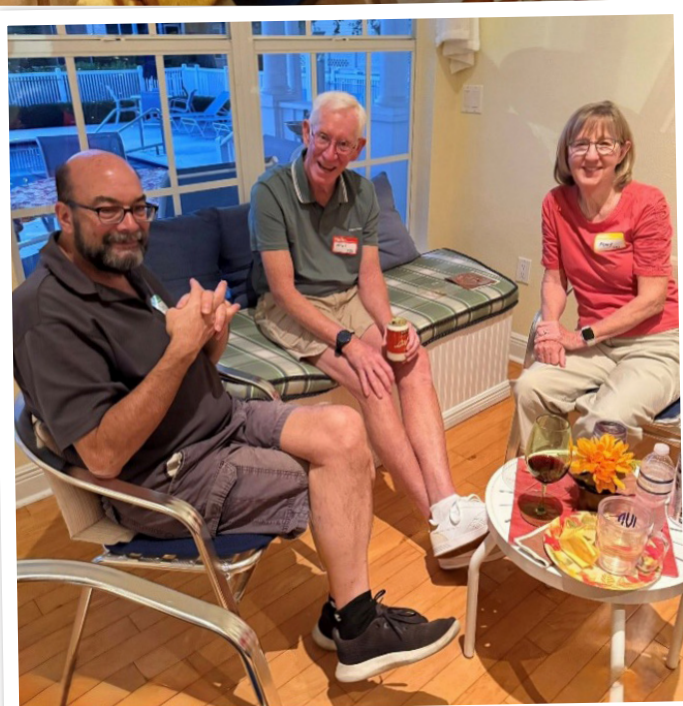
Covenant & Rules Enforcement: Fines

1. The ARC does not set, impose or waive fines.
2. If you failed to seek or obtain ARC approval before starting work, or proceeded with the work without complying with the conditions of approval, the ARC must recommend a fine to the Board once the failure comes to its attention, even if your project is subsequently approved and the work brought into compliance. The Board makes all decisions related to fines, subject to review and approval by the independent Fines Committee. You will be notified and have an opportunity to challenge the fine at a hearing with the Fines Committee at least 14 days before the fine is imposed.
3. If the work undertaken would not have been approved by the ARC or approved only with specific conditions, you may incur additional fines and be required to either restore the property or take other remedial action at your own expense to comply with the conditions. Aggrieved neighbors also can seek to have the covenants enforced against you if the RCA fails to do so on their behalf.
4. Please consult Florida Statutes 720.311 for the enforcement actions (and challenges to them) that are available.

Cottages' Residents Welcomed Back

by Marilyn and Jim May

The Cottages' Welcome Back Happy Hour was held on November 7th in the Clubhouse. Meadow Sweet Circle hospitality was in full swing as snowbirds were welcomed back to the Circle. There were friendships renewed, stories shared and lots of enticing food provided!





Join 665 of your fellow
Rivendell Residents on the NEXTDOOR
social network www.nextdoor.com

Are you seeking a service
provider recommendation?

Do you have an item to sell?

Do you have any questions about Rivendell
or other topics residents can help with?

Nextdoor is the world's largest social
network for the neighborhood.

Nextdoor enables truly local conversations
that empower neighbors to build
stronger and safer communities.

SUDOKU SOLUTION

| | | | | | | | | |
|---|---|---|---|---|---|---|---|---|
| 9 | 6 | 8 | 5 | 2 | 4 | 7 | 1 | 3 |
| 1 | 5 | 2 | 3 | 6 | 7 | 9 | 4 | 8 |
| 4 | 7 | 3 | 9 | 8 | 1 | 2 | 6 | 5 |
| 6 | 4 | 7 | 2 | 3 | 8 | 5 | 9 | 1 |
| 2 | 9 | 1 | 4 | 5 | 6 | 8 | 3 | 7 |
| 8 | 3 | 5 | 7 | 1 | 9 | 6 | 2 | 4 |
| 5 | 1 | 9 | 6 | 7 | 3 | 4 | 8 | 2 |
| 3 | 2 | 6 | 8 | 4 | 5 | 1 | 7 | 9 |
| 7 | 8 | 4 | 1 | 9 | 2 | 3 | 5 | 6 |

FLO-TECH SERVICES

Plumbing and Air Conditioning

AIR CONDITIONING

- Servicing All Brands
- Emergency Service
- Maintenance Agreements Available
- Licenced Technicians



PLUMBING

- Emergency Service
- Remodeling Bath & Kitchen Fixtures
- REPIPE PRO'S
- Water Heaters

State Certified
#CFC1426781
#CAC1817540

A Full Service Contractor

For all your service needs, call **941.426.3664**
flo-techservicesinc.com

FREE
Estimates



**Ask about our York HVAC
equipment 10 year labor warranty.**

