



Your

Community Resource

The Woodlands Word

July 2023

Letter from the President

I have been very busy this month between attending to all the details of transition to Casey Management and assimilating Rivendell's actual financial situation.

Annual Dues

Casey Management has informed me that funds from semi-annual dues have been coming in slowly. The Board had discussed forgoing late charges, but since Casey Management was so efficient in getting out the semi-annual dues' letters to all the Rivendell homeowners, the forgiving of late charges will no longer be considered. Late fees will be discussed at the Rivendell Board Meeting on Wednesday, June 21, 2023. It is imperative that Rivendell Homeowners expedite sending in their semi-annual dues payment to avoid late fees of 18%.

ARC News

I would like to thank the homeowners who have taken advantage of the ARC Dropbox at the Community Pool and using the email address: ARCRivendell@gmail.com.

Janet Lorie has streamlined the ARC system. Upon receiving ARC Requests, Janet immediately reviews the request and notifies the homeowner by email that their ARC Request has been received. If there is additional information needed, she contacts the homeowner and asks them to provide the additional information needed to process their ARC Request.

I would like to thank Gary Mruz for all his technical & video support for the Architectural Review Committee.

Around the Neighborhood

Greg Volack and I have been out surveying and inspecting the Rivendell community and we have found that we still have work to do in the common areas.

There are still numerous dead & downed trees, hanging branches and limbs throughout our neighborhood. We are planning to address these concerns once money becomes available. The Board would like to inform all our residents that these issues will be addressed soon.

Bruce

Bruce Lorie

Rivendell Community Association President



HAPPY
4TH OF JULY





Incursions Co\$t Everyone!

Each year, the HOA spends \$1,000's of valuable community dollars to address incursions, in accordance with our permit. Let's work together to keep our preserves and buffer areas healthy and in compliance. (Bing)

Neighbors

We've all seen the road signs reading something like: Such and Such Company Adopted this road to keep it clean. Well leave it to Scott Christie and Greg Volack to adopt the concept and make it Rivendell's. While they don't have an official name as yet, they do already have volunteers. Scott is adopting the bridges on Rivendell Blvd; Debbie and Greg Volack have dibs on the islands dividing Rainbow Point; Larry Dobias has Crescent Park; and Lisa and Kevin Boggess have already adopted and cleaned up Butterfly Park. (see photo below).

It's a great way to keep our neighborhoods looking spic and span as well as cutting down on potential maintenance costs. Interested? There are no rules other than work on your adopted space when you have time. Call or email Greg for more info and to volunteer. gregvolack@gmail.com.

Speaking of Beautification

A pollinator garden plan (soon to be ARC approved) has sprung up in an empty patch of ground in Crescent Park where a tree was recently lost. We all know the benefits of pollinators and if you don't, please read Sue Remy's insightful report in this issue. This is totally an organic project from the ground up. If you have any seeds or extra plants you are considering thinning out of your garden, please email Greg or Kristine (Kristine@nickelcommunications.com). The only caveat is that you know bees and or birds are attracted to these plants. Making an additional feeding spot for pollinators not only beautifies our neighborhoods, but it is also a very good deed for the planet.





Heating & Cooling Units

10yr. Warranty

Integrity AC, LLC

★★★★★ Great job - super prompt, clean install and very professional. Would highly recommend. - D. Jones

★★★★★ Brandon is very sharp and professional. Fixed two problems that I had quickly and charges fairly. I highly recommend him/Integrity AC. - D. Babecki

★★★★★ Brandon is the absolute best! Responsive/punctual, polite, educated in AC repair, and 100% HONEST! - S. Coffaro

www.BESTIntegrityAC.com

941-704-9413

License#CAC1820225

1202 Gary Ave. Suite #101, Ellenton, FL 34222








The results of Lisa and Kevin's efforts in Butterfly Park photo supplied by Kevin Boggess

A Letter from the Editor



Our summer WW issues tend to be a bit slim. Many of our contributors as well as our residents in Rivendell are enjoying travel during the vacation months or even a second home somewhere outside the steamy state of Florida. We

wish everyone safe travels and satisfying sojourns.

We will be celebrating along with the rest of our nation its July 4th birthday. I was pleased to see so many flags in Rivendell in June on Flag Day. Along with our commemoration of June-teenth, it's good to remember that these days of celebration have their foundation in the principles in which our country was founded. Here's hoping you'll find a moment for reflection.

I'm pleased to announce that Rivendell will be doing just that in November.

CALLING ALL VETERANS.

We will be celebrating Veterans Day on November 11th at the 11th hour, the original Armistice Day, which has been

appropriated as our Veterans Day. While we do not have all of the details in place, we would like to begin the process of identifying all veterans who live in Rivendell. We want to honor your service. So please take a moment and email the co-chairs with your name and include the branch of the military in which you served. And everyone mark their calendar for 11 – 11 – 11 to join us in honoring our neighbors and celebrating our freedoms. More to follow . . .

Jane Stevens Janie0441@gmail.com and Kristine Nickel kristine@nickelcommunications.com Co-Chairs of the 2023 Rivendell Veterans Celebration

A final word about July 4th, please take care with fireworks, especially around children and pets. Many pets are very sensitive to the sounds of firecrackers so let's please be good neighbors and remembers our furry friends.

See you around the 'hood, but not in the middle of the day,

Kristine



| | | | |
|---|---|--|--|
| | <p>EDWARD ROSS CONSTRUCTION SERVICES, INC.</p> | | |
| <p><i>SERVING SARASOTA & MANATEE COUNTIES AND CITY OF VENICE</i></p> | | | |
| <p>941-408-8500</p> | | <p>Mobile Home Repair & Remodeling. Specializing in Kitchens, Baths, Room Additions & Flooring</p> | |
| <p>FREE Estimates SIDING / ADDITIONS •Composite Roofs • Screen Rooms • Windows & Doors ACRYLIC / VINYL WINDOWS • Rescreens • Glass Rooms • Concrete Slabs • Carports</p> | | <p>**Laminate Floors** Find your favorite laminate....I'll lay it beautifully. References Available Licensed & Insured • State Certified General Contractor • CGC1523858</p> | |

Best of Venice Winner for 2022



Remote Programming

Blair Post, HAS, BC-HIS, ACA
Board Certified Hearing Instrument Sciences
American Conference of Audioprosthology

During the quarantine, we all adapted to a new way of living, our new normal. Now connecting with family and friends remotely on video chats or zoom meetings is part of our daily lives.

Like all of us, even the hearing aid industry has adapted to an increase in communicating over the internet. Almost all major brands have a line of hearing aids that can be programmed remotely. How this works is really quite interesting.

Imagine you have been fitted with ReSound Omnia hearing aids, personalized to your unique hearing. These state-of-the-art devices ensure optimal sound quality in various environments, whether you're traveling and encountering new sounds or spending time in different houses between Florida and up north. You'll notice a difference in sound quality changes with the style of each house.

The first signs that you want to review your program show up in conversations. Whether you misunderstand words, ask people to repeat themselves, or you feel like everyone is yelling at you, these are all indicators that your hearing aids may not be performing at their best.

To leverage remote programming, you will call us to set up a virtual appointment. At the time of the appointment, we will connect to your hearing aids through your smartphone. Then we will review the data that is in your hearing aids. This data tells us how you are using your hearing aids, which programs you use the most, your volume adjustments, and battery usage. We will ask you questions to identify situations in which you struggle to hear well, enabling us to help zero in on your most frustrating moments.

Real-time program adjustments are made so you can listen to your spouse in your home to ensure the new adjustments address your specific issues.

The wonders of remote programming are not bound by geographic limitations. We have successfully conducted remote programming sessions as far away as Venezuela, and we have even provided urgent assistance to a client at an airport.

If you travel and want to ensure you hear well in all your environments, call us to demo these new remote programmable hearing aids at no charge, 941-244-9300.



(941) 244-9300

Contemporary HEARING
Matching your lifestyle to new technology

242 Tamiami Trail So, Venice, FL 34285

ContemporaryHearing.com



Join 665 of your fellow Rivendell Residents on the NEXTDOOR social network www.nextdoor.com

Are you seeking a service provider recommendation?
Do you have an item to sell?
Do you have any questions about Rivendell or other topics residents can help with?

Nextdoor is the world's largest social network for the neighborhood. Nextdoor enables truly local conversations that empower neighbors to build stronger and safer communities.



AIR HEAT INC
AIR CONDITIONING / HEATING

941-750-6313

25+ YEARS VETERAN OWNED
SALES * SERVICE * INSTALLS
24/7 EMERGENCY SERVICE



Daniel Sr.



Daniel Jr.



VETERAN OWNED AND OPERATED

ANNUAL A/C MAINTENANCE **\$59.95**

New Customer

NEW A/C SYSTEMS STARTING AT **\$4,095.00**

EMERGENCY SERVICE (no fee with paid repair normally \$95.00)

Expires 7/31/23

MOBILE HOME DUCT WORK REPLACEMENT STARTING AT **\$850.00**

Licensed and insured contractors #CAC056961



Wildlife Window: Nature's Vital Pollinators

Special Benefits of Butterflies, Bees, & Hummingbirds.

Sue Remy, Ponds & Preserves Committee.

Create a Pollinator Garden in your yard and reap the benefits! Formerly known as a “butterfly” garden, nectar-lovers include not only butterflies, but also hummingbirds, bees, and many other flying animals. To attract butterflies, your garden must provide food for both the adult butterflies and their caterpillars. Although many butterflies will drink nectar from a variety of flowering plants, their caterpillars are often limited as to which plants they can feed on. *(Please check ARC/HOA approval requirements before proceeding with any garden plan.)*

The most obvious benefit of pollinator gardening is that it attracts wildlife, bringing butterflies, birds, insects, and more into your garden for purposes of enjoyment, observation, study, and photography. But there’s another important reason: **ecosystem and habitat conservation**. A well-planned pollinator garden becomes a small, but representative sample of the surrounding habitat and as such, provides a safe haven for nectar-loving wildlife to gather, seek shelter, acquire food and water, reproduce and build populations. Do not underestimate the importance of even a small garden.

Habitats are threatened. Butterfly, bee, and bird populations have been declining in recent decades. Loss of habitat and breeding grounds are likely due to increased use of pesticides, over-development, clear-cutting, and deforestation. Pollinators are essential to the reproduction of the vast majority of flowering plants, including most food crops.

Creating a pollinator garden offers excellent practical benefits too.

Use of Florida native plants: plants that are hardy and drought-tolerant, disease & pest resistant, they are specially adapted to our region and perform better under local conditions.

- **Food for natural enemies:** healthy butterfly, bird and bee populations attract and sustain healthy populations of beneficial insects and organisms as well as provide food for birds, lizards, mammals, etc. which in turn help control garden pests. Most nectar sources also attract beneficial insects.
- **Plant diversity:** less susceptible to pests, plus these microclimates provide home and shelter for other insects and wildlife.
- **Scientific:** keeping detailed logs on the pollinator species encountered, times, & abundance can provide important and useful information on these population numbers nationwide.

| Monarch Butterfly | Giant Swallowtail | Honeybees | Hummingbirds |
|---|--|--|---|
|  |  |  |  |
| <p>Plant a pollinator garden and invite this “King” into your backyard. While feeding on nectar, they pollinate many types of flowers. (B. Frank)</p> | <p>Striking and exotic-looking butterflies with countershading, dark on the topsides of wings & yellow on the bottom. (B. Frank)</p> | <p>Many plants produce pollen for bees, but honeybees still need nectar for honey production. (ifas.ufl.edu)</p> | <p>These birds need high-energy food to support their high-energy activities and flying. (ifas.ufl.edu)</p> |

Don’t discount the special therapeutic benefits! Pollinator gardens provide a soothing retreat from everyday life. And if you use herbs to attract nectar-loving wildlife, you will have the bonus of aromatherapy. Plant a pollinator garden today! It will be a win-win for wildlife and humans alike!

(Source: ifas.ufl.edu)

Click here to visit the Ponds & Preserves website at <https://www.rivendellcommunity.com/ponds>.

Plus, check out the North American Butterfly Association site at: <http://nababutterfly.com/>



Inspecting and Protecting Our Preserves. Homeowner & Resident Incursions Co\$t Everyone!

By Sue Remy, Ponds & Preserves Committee.

Living in Rivendell with its 115 acres of 14 Wetland and Upland Preserves is one of the reasons we are here. Both beautiful and functional, our preserves, along with our ponds, are part of our stormwater management system designed to control flooding. Rivendell Community Association (RCA) is responsible for maintaining our preserve areas as required by the Southwest Florida Water Management District (SWFWMD) and the County. One-third of our homes border designated buffer or preserve areas. These residents should be aware of their special responsibilities.

How Are Wetlands Beneficial? Wetlands provide storage of floodwaters and stormwater runoff. They also improve water quality by absorbing excess nutrients from urban runoff. Plus, preserves provide much-needed habitat, food sources, and nesting sites for wildlife, especially threatened and endangered species.

Our RCA/HOA is responsible for maintaining our Preserves in accordance with the requirements of our permit. The HOA hired a professional preserve maintenance company who regularly inspect these areas. They will remove invasive or exotic vegetation. They also identify and report areas of encroachment or incursions by residents beyond their property line. You may also see P&P members in your backyard walking along preserve areas to assist with these inspections.

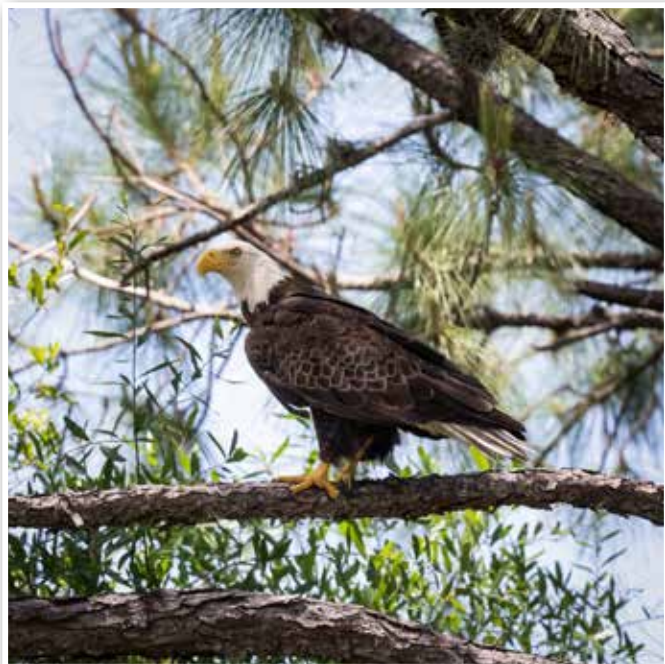
These preserves and buffer areas are not your property! Incursions and remediation are costly and affect

everyone. Preserves are to be left untouched. HOA's contractors inspect preserve areas for incursion violations to preempt County fines or penalties. Homeowners are notified of incursions for remediation. Some incursion violations have included:

- Vegetation removal or trimming beyond the property line
- Dumping of yard waste within designated buffer/preserve areas
- Unauthorized planting or encroachment of nuisance or exotic vegetation and trees
- Extension of lawns or planting vegetable/garden areas into buffer/preserve land
- Construction of any structure or seating area in buffer/preserve areas
- Landscape lighting directed into preserves or buffer areas is not permitted

Each year, the HOA spends \$1,000's of valuable community dollars to address incursions and ensure compliance with our permit. Valuable community resources have been spent on remediation from resident incursions that otherwise should be earmarked for positive improvements to our natural resources and beneficial wildlife habitats. Incursions hurt everyone. Know your property line and do not encroach beyond it. Let's work together to keep our wetland and upland preserves and buffer areas healthy and in compliance.

Click here to visit the Ponds & Preserves website at <https://www.rivendellcommunity.com/ponds>.



As part of our Stormwater System, preserve areas play a vital role to control flooding and absorb excess nutrients. Plus, they provide critical habitats for our wildlife, such as this magnificent Eagle. (Bob Frank)



Preserve and buffer areas must be left alone, in accordance with our permit. Know your property line. Do not encroach beyond your yard with any vegetation or structures, nor deposit any debris. (Remy)

The Significance of Flag Etiquette



As we approach Independence Day, the sight of the Star-Spangled Banner fluttering with patriotic zeal across our nation becomes an inspiring sight. This powerful symbol of unity, resilience, and shared ideals reminds us of the bond we share as a country. But as we prepare to hoist our flags high with pride, it's vital we take the time to understand and observe proper flag etiquette.

This practice demonstrates our respect for our flag's rich history and deep symbolic value. Here's some interesting flag etiquette:

- Handling the Flag: The American flag should always be treated with respect. It should never touch the ground or any object beneath it.
- Hoisting and Lowering: The flag should be hoisted briskly and lowered ceremoniously, reflecting its noble stature.
- Night Display: The flag should only be displayed at night if it's properly illuminated, ensuring its visibility.
- Weather Conditions: If displayed during inclement weather, it must be an all-weather flag, demonstrating its resilience.
- Positioning: The position of the flag carries significant importance. When displayed vertically or horizontally against a wall, the union (the blue field of stars) should be on the observer's left.
- Mobile Display: If the flag is displayed on a car, it should be affixed to the right-side antenna. Similarly, if on a float in a parade, it should be displayed from a staff.
- Parity with Other Flags: When displayed alongside other flags, the U.S. flag should be at the highest point, at the same level, but never below, demonstrating its status.

Moreover, our respect for the flag extends to public gatherings and events. During the national anthem, citizens should stand at attention with their right hand over their heart. Simultaneously, military personnel and veterans, as a sign of their unwavering commitment, should render a military salute.

When our flags become so worn that they're no longer fit for display, it's our duty to retire them properly. The flag should be destroyed in a dignified way, preferably by burning. Many organizations such as the American Legion, Boy Scouts of America, and Girl Scouts of America hold annual flag retirement ceremonies for this purpose.

This Independence Day, let's celebrate our freedom and unity by treating our flag with the respect it deserves. Adhering to the U.S. Flag Code isn't just about handling a piece of cloth; it's about upholding the spirit of America, honoring our shared history, and reflecting our national values. By observing these practices, we contribute to the national narrative of respect and unity that the flag so proudly symbolizes.

RIVENDELL Social Committee Calendar: July 2023

Thursday, July 6, 1:00 pm. Bridge Club.
RSVP to Barb Loe at 651-398-2256.

Thursday, July 20, 1 pm. Bridge Club.
RSVP to Barb Loe at 651-398-2256.

**Friday, July 28, 10am to 12 pm. Inquisitive Minds
Discussion Group.**

RSVP to Mike Gruenfeld at 941-685-5166. – PLEASE
CHECK WITH MIKE PRIOR TO THE MEETING



**The Rivendell Community Web Site
is available at**

WWW.RIVENDELLCOMMUNITY.COM



Book Nook

Congratulations to Book Group I who have selected books into 2024. Peruse this list and check out the books to be read and discussed.

Book Group II has discussed a few different choices and will be publishing its list in the August issue of WW.

Our book groups are not only stimulating, but they are also all kinds of fun. If you wish to join, please reach out to Maria Iliof or Adele Kellman.

Rivendell Book Group Schedule for 2023 as of June 12, 2023

| Date | Book & Author | Lead | Host |
|---------------|--|---------------|---------------|
| Sept 11, 2023 | <i>Mrs. Benson's Beetle</i> by Rachel Joyce | Judy Sokol | Vivien Cruz |
| Oct 9, 2023 | <i>An Affair of Spies</i> by Ronald H. Balson | Vivien Cruz | Carol Heckert |
| Nov 13, 2023 | <i>The Only Woman in the Room</i> by Marie Benedict | Barb Gahry | |
| Dec 11, 2023 | <i>Born a Crime</i> by Trevor Noah | Carol Heckert | Beryl Nord |

Rivendell Book Group Schedule for 2024 as of June 12, 2023

| | | | |
|----------------|---|--|--------------|
| Jan 8, 2024 | <i>When We Were Young & Brave</i> by Hazel Gaynor | | Barb Gahry |
| Feb 12, 2024 | | | Lesley Glick |
| March 11, 2024 | <i>Demon Copperhead</i> by Barbara Kingsolver | | |

SAVING A LIFE EVERY 11 MINUTES!

I'm never

alone.

Life Alert® is always there for me, even when I'm on-the-go.

One touch of a button sends help fast, 24/7.

FREE GIFT

FREE Shipping

HELP AT HOME

HELP ON THE GO

Batteries NEVER Need Charging.

FREE!

FIRST AID KIT WHEN YOU ORDER

Call for a **FREE** brochure:

1-800-583-5683

Life Alert

I've fallen and I can't get up!

PROFESSIONAL



PLUMBING DESIGN, INC.

A COMPANY YOU CAN TRUST

- ✓ Fully licensed, bonded & insured
- ✓ 100% Satisfaction Guaranteed
- ✓ Family owned and operated since 1985
- ✓ Better Business Bureau A+ rated
- ✓ Non-Commission Employees
- ✓ Non-Franchise Company
- ✓ Third party verification by:



Call The Professionals!
(941) 484-4444

www.ProPlumbingDesign.com

Lic. # CFC 057045

\$10.00 OFF Service

PROFESSIONAL PLUMBING

Cannot be used on minimum service charge and cannot be combined with any other discounts

Protect yourself from the sun...
Don't forget your sunscreen and sunglasses!



TARGET YOUR MARKET!
Call us today to get your ad in one of our community newsletters!

941-723-5003



ON TRAC PUBLISHING
P.O. Box 161
Ellenton, FL 34222
A subsidiary of PCI Communications

www.ontracnewsletters.com email: valerie@ontracnewsletters.com

EXPERIENCED • PROFESSIONAL • COURTEOUS

COMMUNITY ROOFING OF FLORIDA, INC.

Free Estimates



Lic# CCC1330642

"Proudly Serving Your Community"

100% Maintenance Free Roofs!

We Do All
Roof Overs, Roof Coatings
Roof Repairs & Inspections
on all Manufactured Homes

800-511-2517

www.CommunityRoof.com

Lifetime Warranty on Labor & Materials!







Rivendell Community Contacts

Committees

Block Captain Committee

Chair: Rachel North Zipay (mobilerach@verizon.net)
Board Liaison: George Smith

CERT Committee

Chair: Paul Englert (paule253@hotmail.com)
Board Liaison: Cathy Daignault
Members: Need Volunteers. Please contact Paul if interested.

Communication Committee

Chair: Kristine Nickel
(kristine@nickelcommunications.com)

Board Liaison: Bruce Lorie
Marylin May, Jim May, Barbara Gahry
Nancy Giordano, Chris Smith, Dana Schroeder

Adjunct Members & Woodlands Word reporters:

Adele Kellman & Sue Remy

Architectural Review Committee (ARC)

Chair:

Questions or Submissions:
Patricia.Goldstein@mgmt.tv
Board Liaison: Bruce Lorie
Members: Joseph Casale, Maureen Emmons,
James Duncan, Janet Lorie

Fine Administration Committee (FAC)

Chair: Bob Thierfelder (rcthierfelder@gmail.com)
Board Liaison: Kevin Boggess
Members: Bill Bloom, Mary Kennedy, Ken Alarie
Gary Glick

Maintenance Committee (MC)

CHAIR. TBD

Board Liaison: Greg Volack (gregvolack@gmail.com)
Members: Larry Dobias, Chuck Pertile, Carole Miles
Terry Siemsen, Kevin Humbert, Alexis Spaulding
Peter Daignault

Ponds & Preserves Committee

Chair: Bob Frank (frank@ohio.edu)
Board Liaison: Kevin Boggess
Members: Larry Dobias, Sue Remy, Tom Hurban
Dave Gill, Ken Heckert, Allie Sandow Frank,
Ray Ellison

Social Committee

Chair: Maria Ilioff

Board Liaison: Mary Angell
Members: Lisa Boggs, Kathy Halaiko,
Adele Kellman, Kathy Lysak, Allie Sandow
Jane Stevens

Block Captain Committee

Chair: Rachel North Zipay (mobilerach@verizon.net)
Board Liaison: Cathy Daignault

Rivendell Board of Directors

Bruce Lorie, Director - President

Liaison to the Communications Committee
blorierivendell@gmail.com

Greg Volack, Director - Vice President

Liaison to Maintenance Committee
gregvolack@gmail.com

Cathy Daignault, Director - Treasurer

Liaison to Pool Committee & Cert Committee
catdaignault@yahoo.com

Mary Angell, Director - Secretary

Liaison to Block Captain Committee &
Social Committee
meangell06@gmail.com

Kevin Boggess, Director - Director at Large

Liaison to ARC Committee & Fine Admin Committee
& Ponds & Preserves Committee
kbogg@msn.com

Sub-Association Boards of Directors

The Cottages Board of Directors

RU1NA=Rivendell Unit 1 Neighborhood Association

Marilee Casale, President (marileecasale@gmail.com)
Steve Bragg, 1st Vice President (smbragg@ilstu.edu)
Bob Metelko, 2nd Vice President (bob@csdsinc.net)
Jim May, Treasurer (jdmay333@gmail.com)
Tom Hickey, Secretary (Hickeytd@gmail.com)

Patio Homes Board of Directors

Bob Thierfelder, President rcthierfelder@gmail.com
Dan Tavares, Secretary dtavares1507@gmail.com
Barbara Lewis, Treasurer bplrcl@comcast.net

The Villas Board of Directors

John Barron, President (johnbarron@gmail.com)
Alex Elshimy, Vice President (alexelshimy@aol.com)
Ronald Grinnell, Treasurer (rongrinnell@hotmail.com)

Rivendell Website

www.rivendellcommunity.com

Woodlands Word Deadline:

Submit articles and information to Kristine Nickel
(kristine@nickelcommunications.com)
by the tenth of the month.

Updates to the Contacts Page:

Kristine Nickel kristine@nickelcommunications.com)

Nuisance Alligator

Call Florida Fish & Wildlife - SNAP 866-392-4286
Do Not Call Property Management

Sarasota County Sheriff

Non-emergency Number: 941-316-1201
Please use this number for non-emergencies